

## Overview

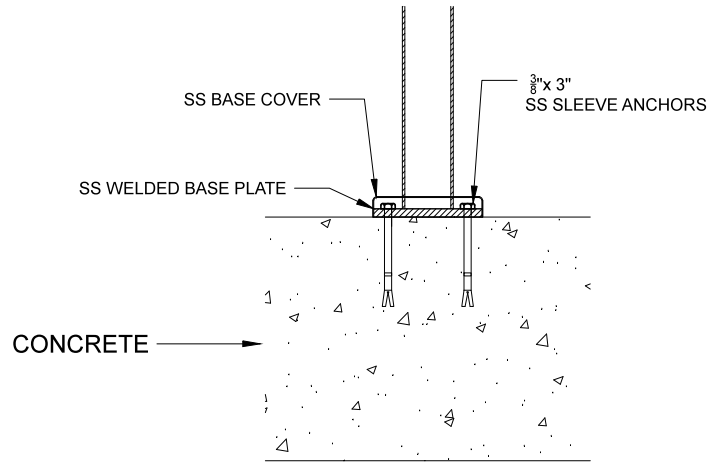
Due to the variety of floor surfaces, customers must supply the connecting hardware for the base, i.e. screws, bolts, anchor bolts, etc. This is stated on every post page on our website.

i.e. <https://inlinedesign.us/products/36-stainless-steel-railing-systems-square-end-post-w-square-glass-clamps-with-toprail>

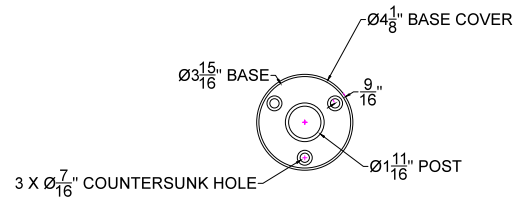
This document shows anchoring options into different surfaces. Please use this document as a guide only. Customers are responsible to complying with their local building codes and/or architects guidelines therefore Inline Design shall, in no way be liable for any incidental or consequential damages caused. Please refer to our complete terms of sales for further information [https://inlinedesign.us/terms\\_of\\_sale](https://inlinedesign.us/terms_of_sale)

FLOOR MOUNT ANCHORING INTO CONCRETE AND WOOD

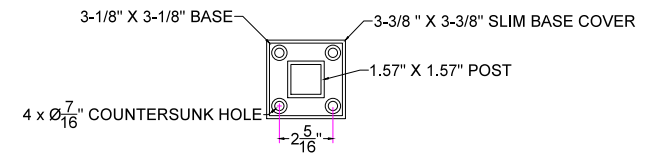
FRONT VIEW



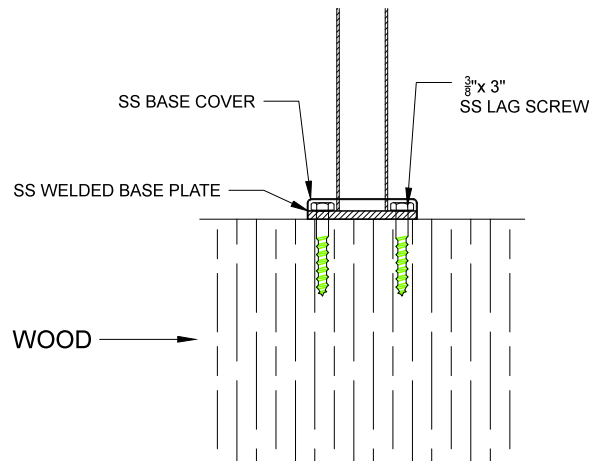
TOP VIEW ROUND



TOP VIEW SQUARE



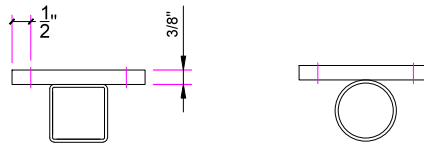
FRONT VIEW



END & MIDDLE FASCIA BRACKET ANCHORING INTO CONCRETE AND WOOD

TOP VIEW SQUARE

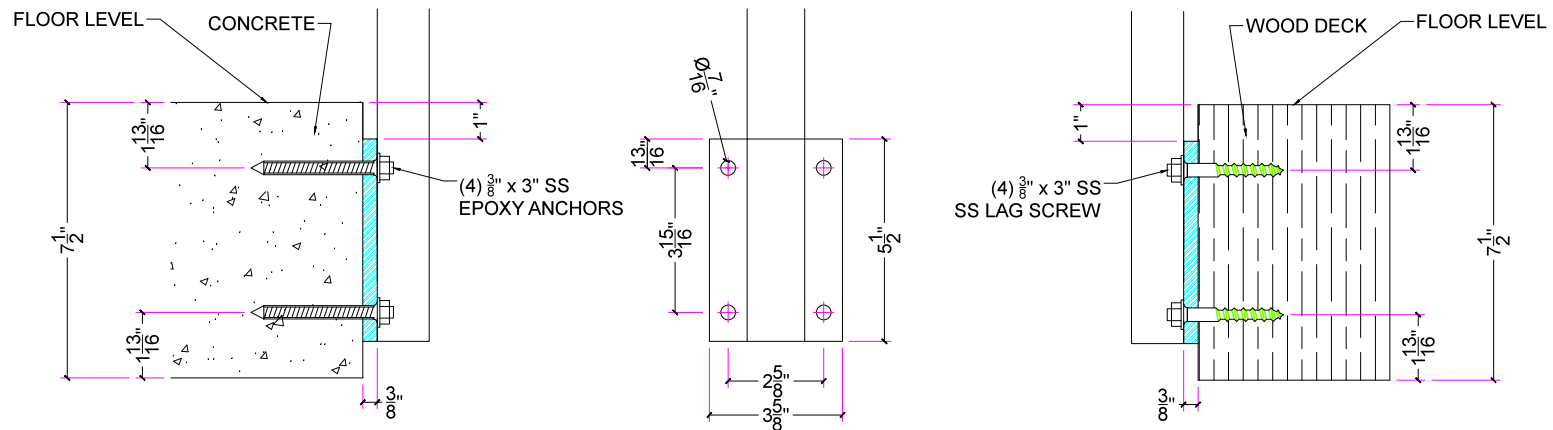
TOP VIEW ROUND



SIDE VIEW

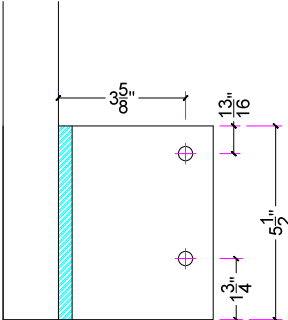
FRONT VIEW

SIDE VIEW

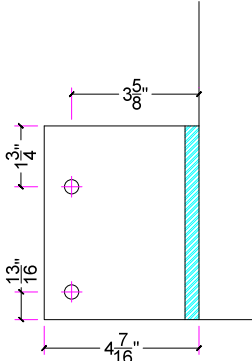


OUTSIDE CORNER FASCIA BRACKET

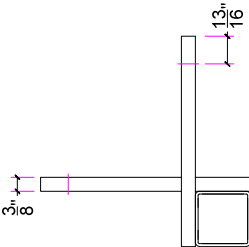
SIDE VIEW LEFT



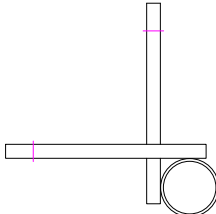
SIDE VIEW RIGHT



TOP VIEW SQUARE

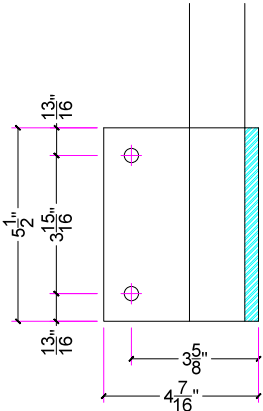


TOP VIEW ROUND

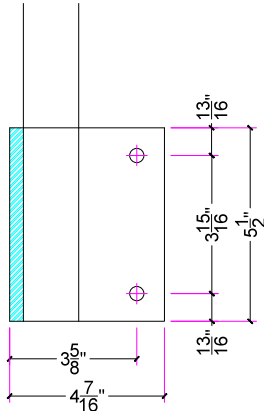


INSIDE CORNER FASCIA BRACKET

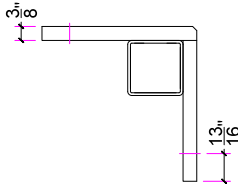
SIDE VIEW LEFT



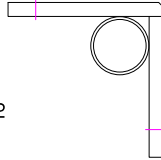
SIDE VIEW RIGHT

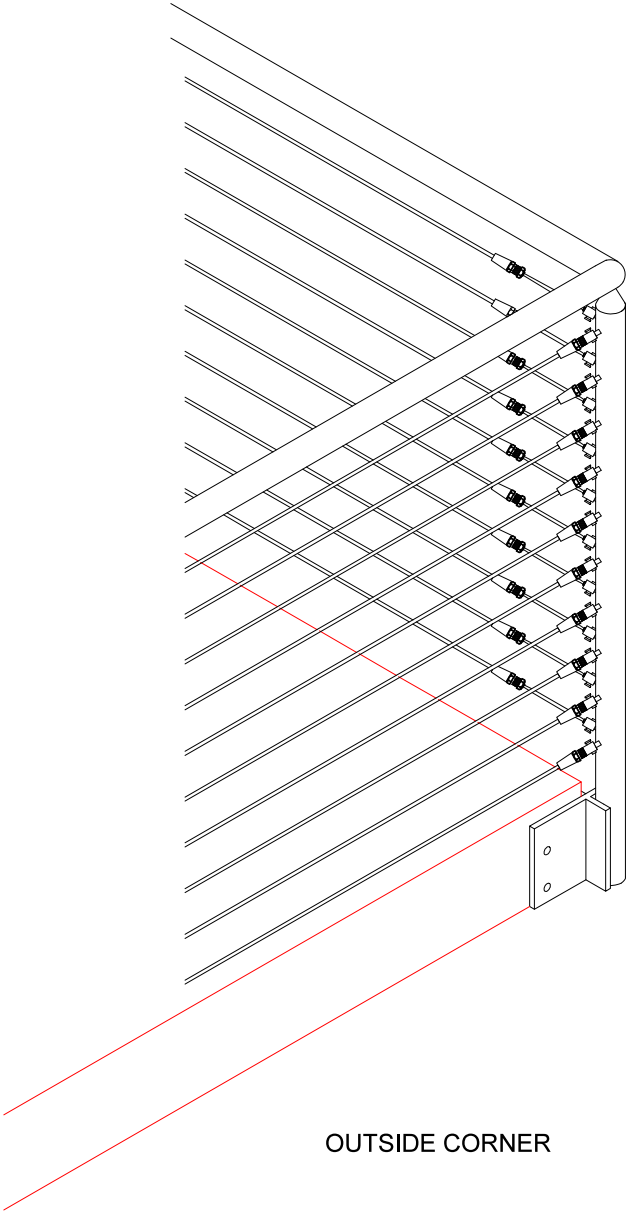


TOP VIEW SQUARE

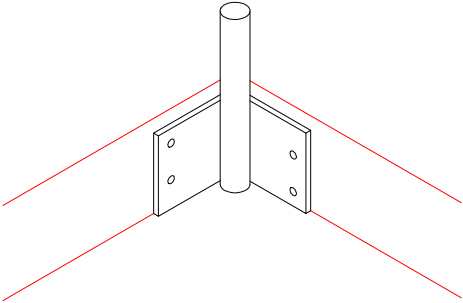


TOP VIEW ROUND





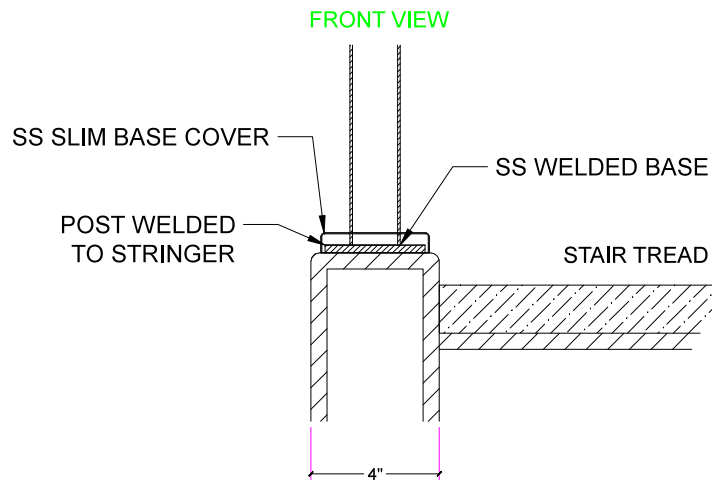
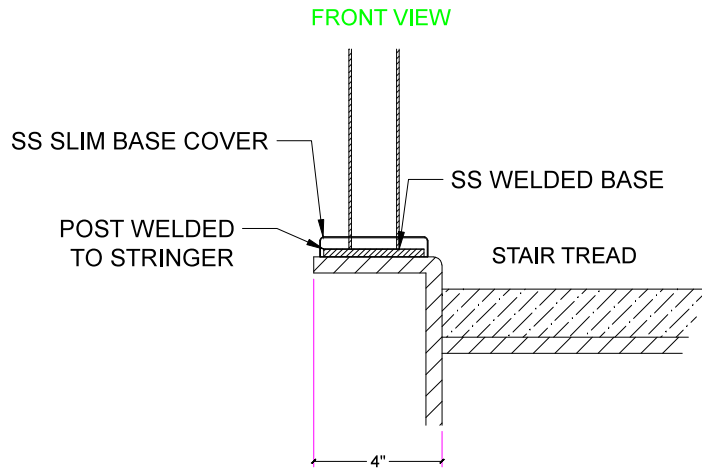
OUTSIDE CORNER



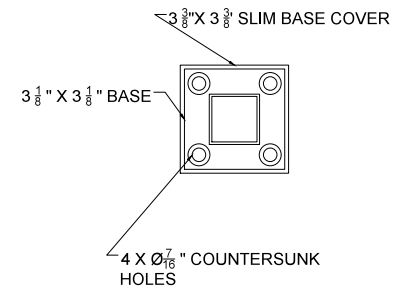
INSIDE CORNER

WELDED STAIR MOUNTING (CHANNEL STRINGER)

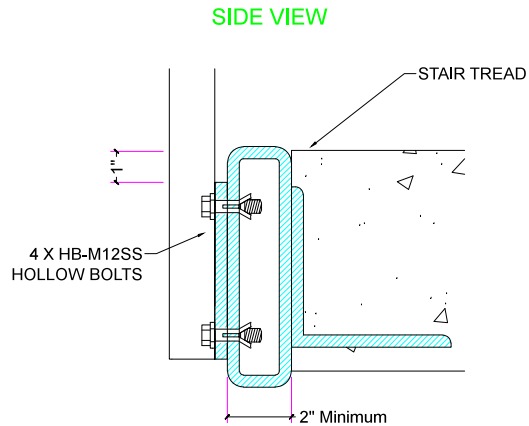
WELDED STAIR MOUNTING (4" STRINGER)



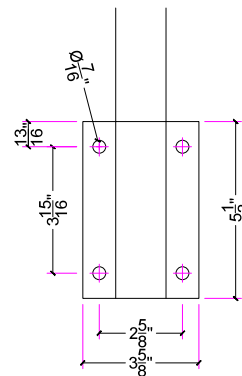
TOP VIEW SQUARE



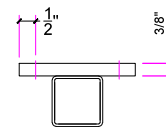
FASCIA WALL MOUNT SPECS INTO TUBE STRINGER



FRONT VIEW



TOP VIEW SQUARE



TOP VIEW ROUND

