

## Installing Press and Latch Cable Tensioner and Ender on straight runs

---

### Overview<sup>1</sup>

These instructions provide step-by-step installation guidelines for installing the Press and Latch Cable Tensioner and Ender on straight runs. The tensioners are designed for 1x19 construction stainless steel cables of diameter 5/32" (4mm) or 1/8" (3.2mm). Each run of cable has a Cable Tensioner from one side and a Cable Ender (or Terminal) from the other side.

#### Caution:

Wear protective ANSI approved safety glasses, working gloves and breathing mask at all times

---

### Tools Required

- 1) Cable cutter (recommended from [Harbor Freight](#))
  - 2) 2 x 10mm wrenches
- 

### Part List

- 1) Release tool



- 2) Curved and Flat Washers



- 3) Cable Tensioner



- 4) Cable Ender



---

<sup>1</sup> This document includes hyperlinks and is intended to be viewed as a PDF file rather than print material

## Instructions

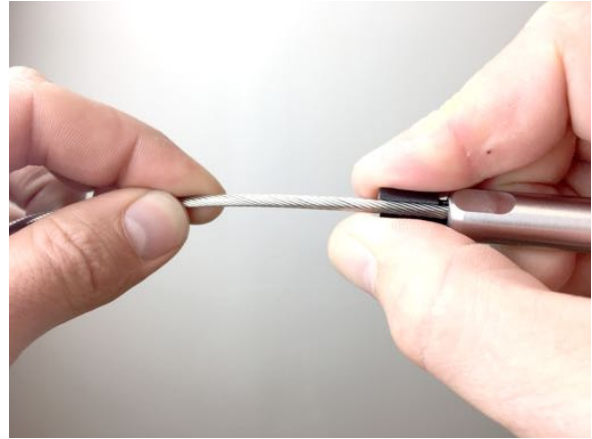
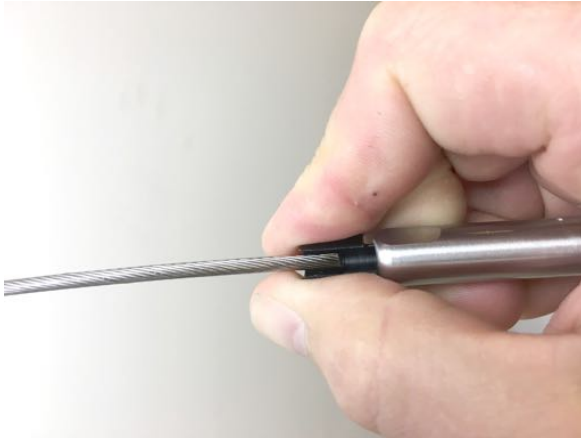
- 1) Begin by inserting the provided washers (flat washer for square posts and curved washer for round posts) into the cable tensioner and ender then screw them into the posts using a 10mm wrench. Make sure they are tightened well



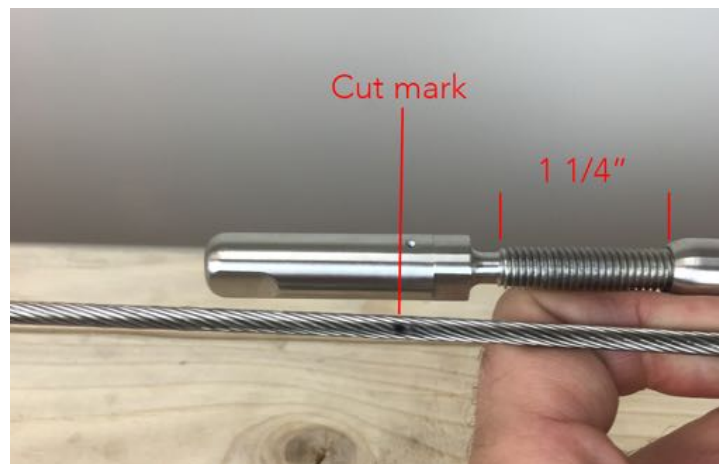
- 2) Using the release tool press in the tensioner and the ender spring to release the factory latch in order to prepare for the cable



- 3) With the release tool in the fitting, press the cable into the terminal side first (for about 1 1/4" until it hits the back of the fitting), then remove the release tool, and double check one more time that the cable is pressed all the way back.



- 4) Unscrew the turnbuckle of the tensioner to about 1 1/4" from each side, then mark your cable for the cut



- 5) Cut the cable using the cable cutter. You could release the cable from the cable ender (using the Release Tool) to measure and cut the remaining run of cables. Follow step number 3 to re-latch it
- 6) With the release tool in the fitting, press the cable into the tensioner side (for about 1 1/4" until it hits the back of the fitting), then remove the release tool, and double check one more time that the cable is pressed all the way back.

- 7) Tighten the cable by using two 10mm wrenches as shown in the following picture (avoid super tightening)



- 8) Repeat the same for the rest of the cables of this run

- 9) After making sure that all the cables are equally tensioned, tighten the lock washer located at the end of the turnbuckles



---

*NOTE: A small amount of surface corrosion is not uncommon after some exposure to weather or salty conditions; we recommend using our [passivation solution](#) or a stainless steel polish to prevent surface corrosion; more information available [on our Engineering Specs Page](#)*